

Bronze Gauge Glass Valve

SPECIFICATIONS

MATERIAL	BRONZE
END CONNECTIONS	FLANGED
END FLANGES	BS 10 TABLE-H
WORKING PRESSURE	17.5 Kg/sq.cm. & TEMP UP TO 225°C
TESTING PRESSURE	35 kg/sq.cm. HYDRAULIC
SIZE	20 mm

DESCRIPTION MATERIAL

WATER ARM BODY	BRONZE (IBR 282 A GRADE B)
STEAM ARM BODY	BRONZE (IBR 282 A GRADE B)
DRAIN ARM BODY	BRONZE (IBR 282 A GRADE B)
SEAT	SS 304
SPINDLE	SS 410
DIAPHRAGM	SS 304
BUSH	C.F.T.

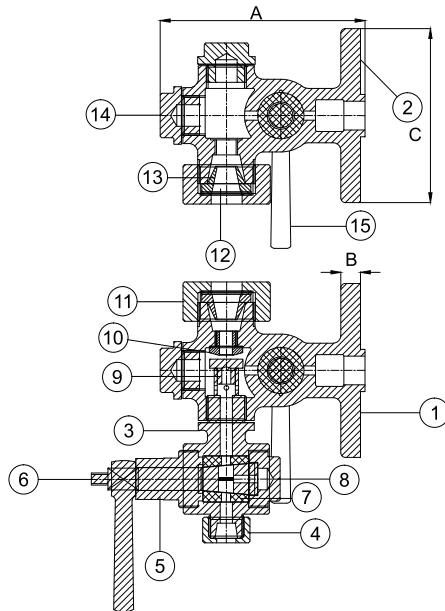
BRONZE GAUGE GLASS VALVE

DIMENSION

SIZE	A	B	ØC	PCD
mm	mm	mm	mm	mm
20	135	13	115	82.5

Features

Automatic shut off in water arm.
Right hand or Left hand Assembly.
Glass Tube and Protector Glass Assembly can be supplied at extra cost.



SG Iron Gauge Glass Valve

SPECIFICATIONS

MATERIAL	SG IRON IS 1865
END CONNECTIONS	FLANGED
END FLANGES	BS 10 TABLE-H
WORKING PRESSURE	17.5 Kg/sq.cm. & TEMP UP TO 225°C
TESTING PRESSURE	35 kg/sq.cm. HYDRAULIC
SIZE	20 mm

DESCRIPTION MATERIAL

WATER ARM BODY	SG IRON IS 1865
STEAM ARM BODY	SG IRON IS 1865
DRAIN ARM BODY	SG IRON IS 1865
SEAT	SS 410 / SS 304
SPINDLE	SS 410 / SS 304
DIAPHRAGM	SS 410 / SS 304
BUSH	C.F.T.

SG IRON GAUGE GLASS VALVE

DIMENSION

SIZE	A	B	ØC	PCD
mm	mm	mm	mm	mm
20	135	13	115	82.5

