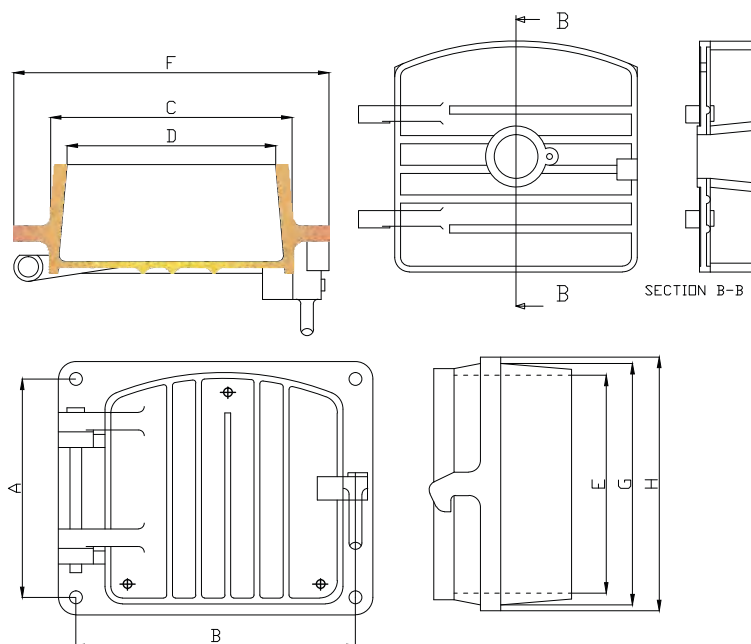


## Furnace Door 1



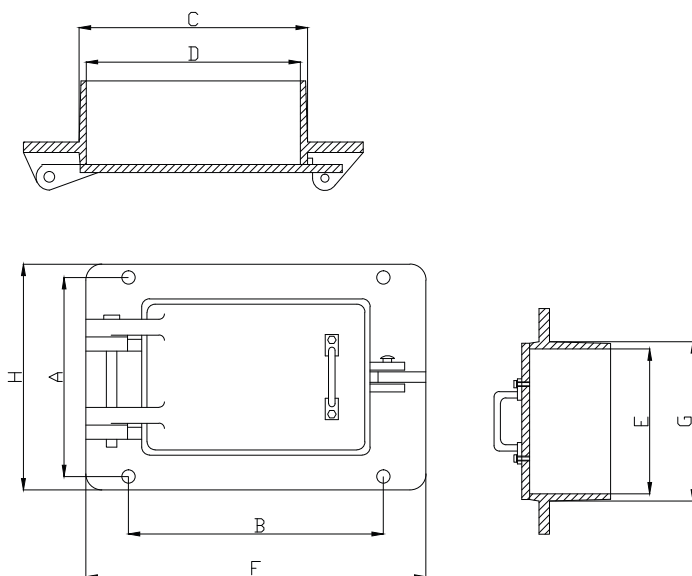
DIMENSIONS ARE IN MM									
SR. NO	A	B	C	D	E	F	G	H	REMARKS
D1	540	630	563	543	538	690	561	600	—
D2	375	480	416	393	373	540	396	435	—
D3	375	480	416	393	373	540	396	435	—
D4	540	480	416	393	538	540	561	600	—
D7	540	630	563	543	538	690	561	600	WITH PEEP HOLE
D8	375	480	416	393	373	540	396	435	WITH PEEP HOLE

MATERIAL - ALLOY CAST IRON

NOTE :

D3 IS ASH DOOR AND REST ARE FIRE DOORS  
WE CAN ALSO PROVIDE DOORS WITH  
EXTRA HEIGHT

## Furnace Doors 2

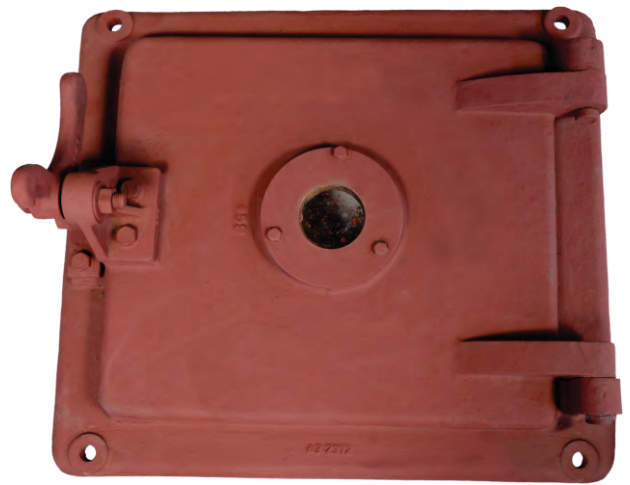
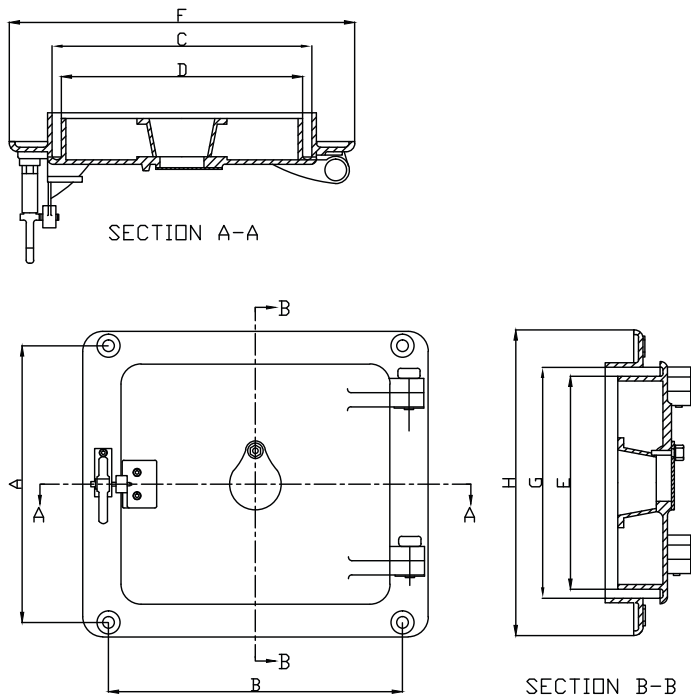


DIMENSIONS ARE IN MM									
SR. NO	A	B	C	D	E	F	G	H	REMARK
D5	540	480	540	507	402	640	435	610	FIRE DOOR
D6	375	480	430	403	273	640	300	425	ASH DOOR

MATERIAL - ALLOY CAST IRON

NOTE - D6 IS ASH DOOR.

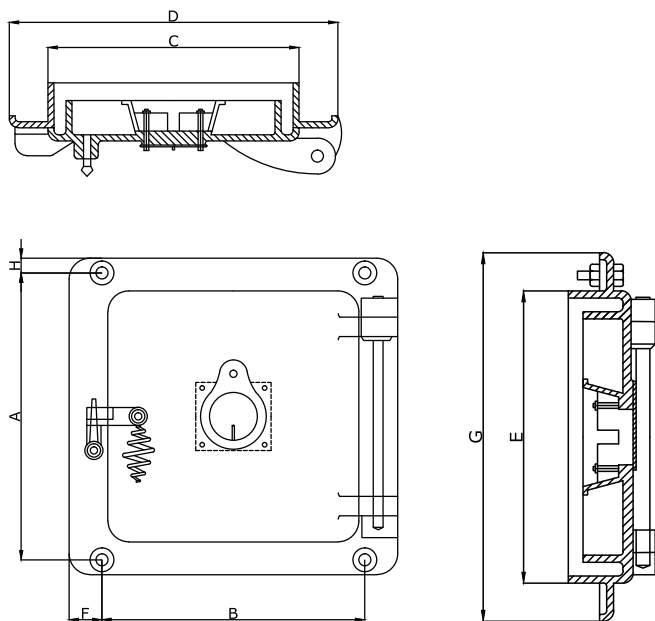
## Furnace Doors 3



MATERIAL - ALLOY CAST IRON

DIMENSIONS ARE IN MM									
SR.No	A	B	C	D	E	F	G	H	REMARK
D9	484	514	454	422	372	604	404	534	WITH PEEP HOLE

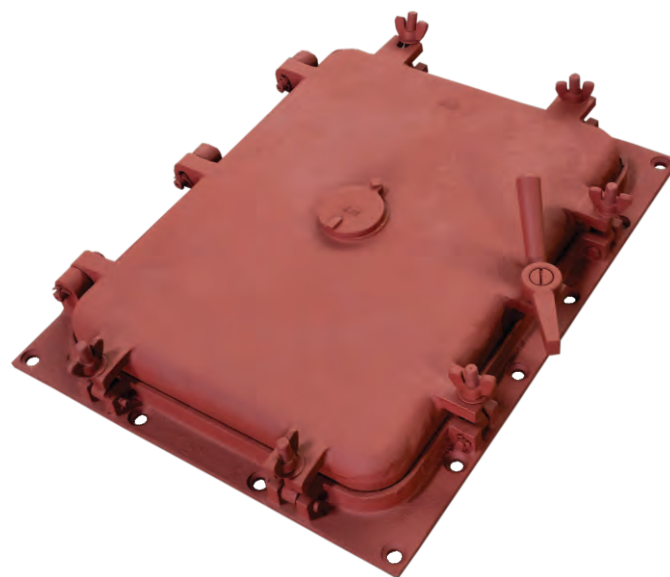
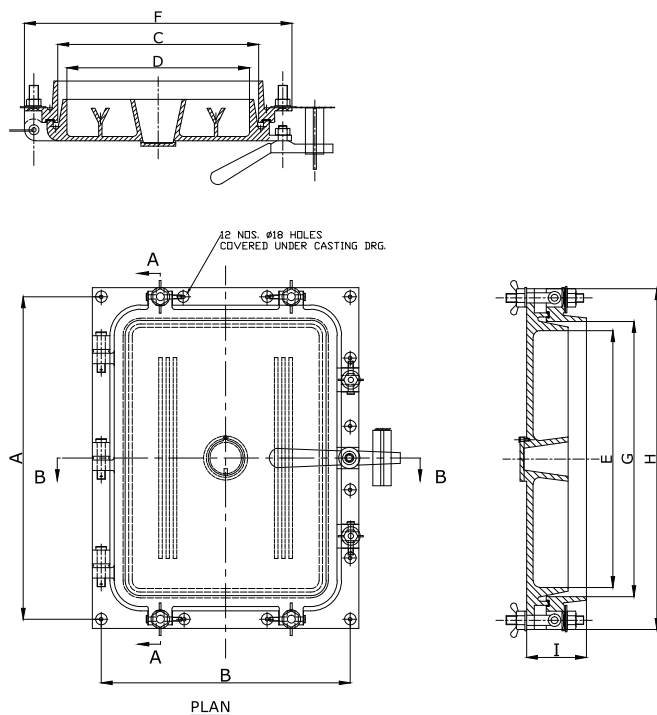
## Furnace Doors 4



MATERIAL - ALLOY CAST IRON

DIMENSIONS ARE IN MM									
SR.NO	A	B	C	D	E	F	G	H	REMARK
D10	480	440	420	550	420	55	530	25	WITH PEEP HOLE

## Furnace Doors 5

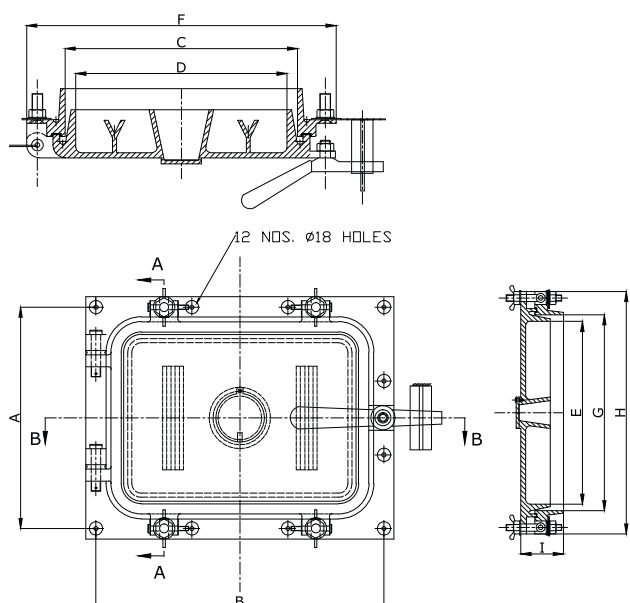


DIMENSIONS ARE IN MM

SR.NO	A	B	C	D	E	F	G	H	I	REMARK
D11	738	570	460	418	588	610	630	780	137	WITH PEEP HOLE

MATERIAL - ALLOY CAST IRON

## Furnace Doors 6



DIMENSIONS ARE IN MM

SR.NO	A	B	C	D	E	F	G	H	I	REMARK
D12	438	570	460	418	288	610	330	480	137	WITH PEEP HOLE

MATERIAL - ALLOY CAST IRON