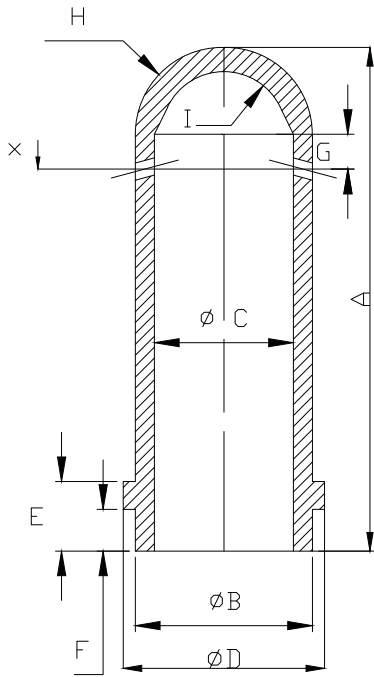


## Nozzle 1 & 2



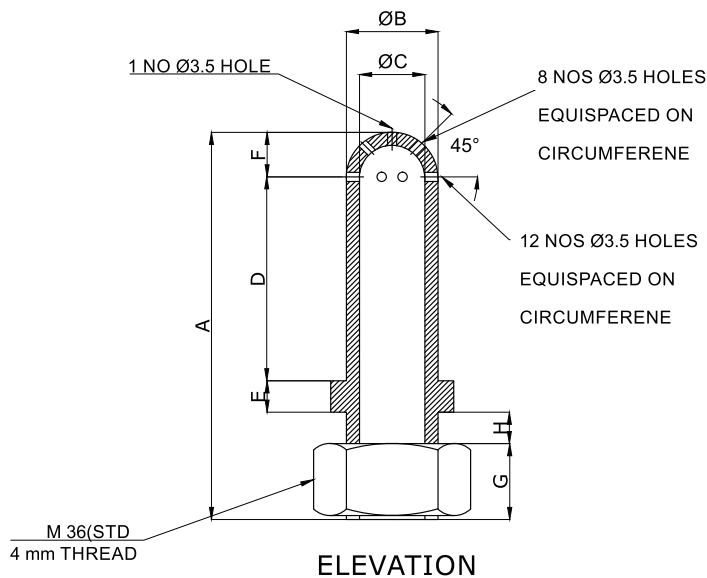
DIMENSIONS ARE IN MM

SR.No	A	ØB	ØC	ØD	E	F	G	H	I
N1	110	51	40	58	20	12	10	R25	R18
N2	135	51	40	58	20	12	10	R25	R18

MATERIAL - ALLOY CAST IRON



## Nozzle 3



ELEVATION

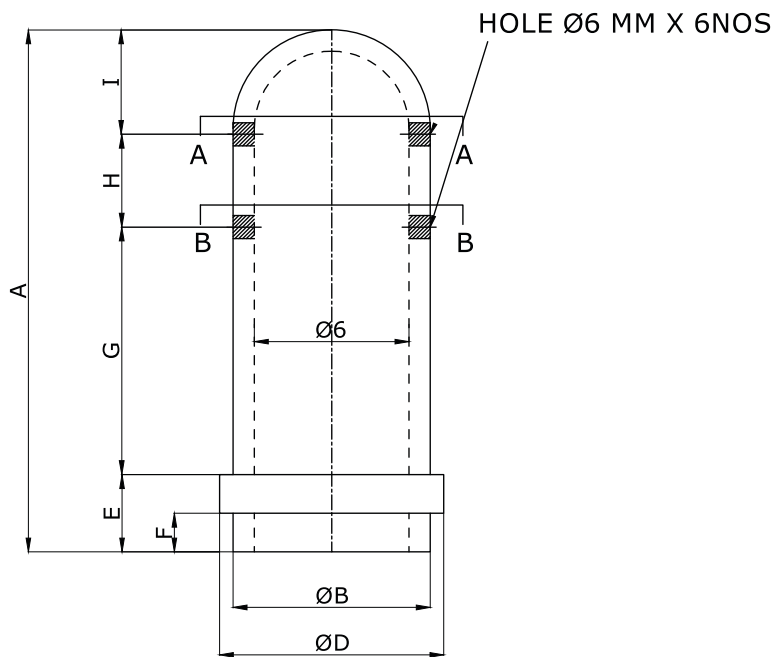
DIMENSIONS IN MM

Size	A	ØB	ØC	D	E	F	G	H	I	J
N3	148	35	25	78	12	17	29	12	R27	47

MATERIAL - ALLOY CAST IRON



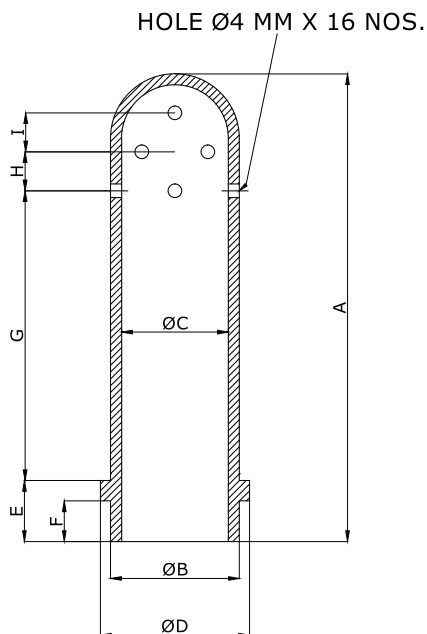
## Nozzle 4



DIMENSIONS IN MM									
Size	A	ØB	ØC	ØD	E	F	G	H	I
N4	135	50	40	58	20	10	64	24	27

MATERIAL - ALLOY CAST IRON

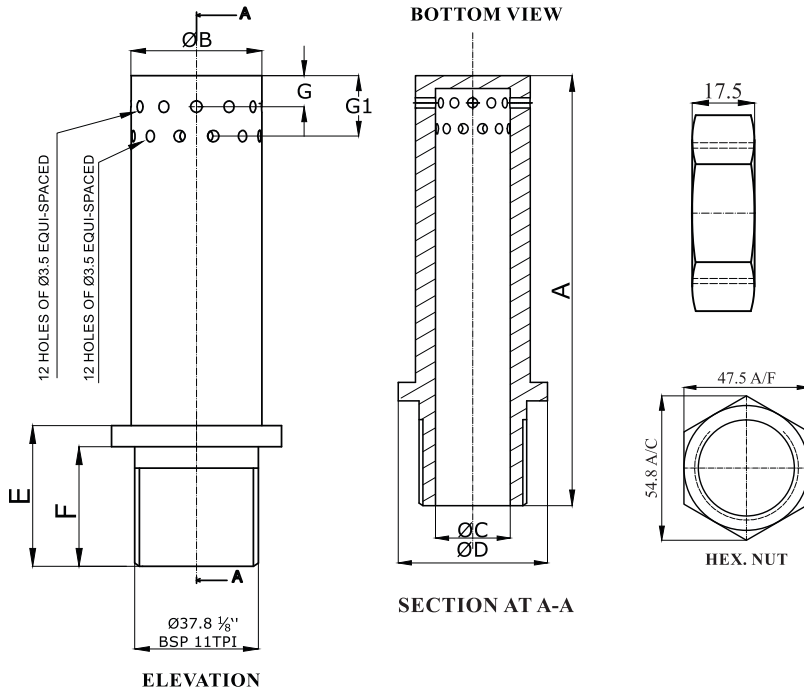
## Nozzle 5



DIMENSIONS IN MM									
Size	A	ØB	ØC	ØD	E	F	G	H	I
N5	138	38	31.5	44	18	12	85.5	11.5	11.5

MATERIAL - ALLOY CAST IRON

# Nozzle 6

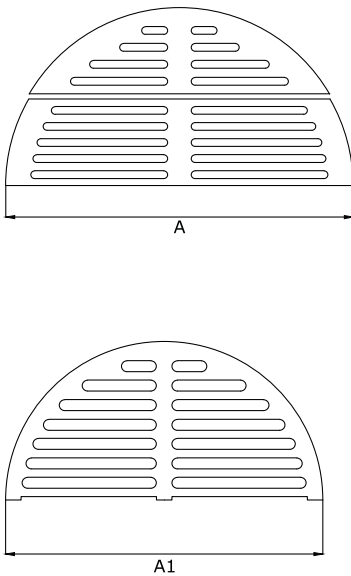


DIMENSIONS IN MM								
Size	A	ØB	ØC	ØD	E	F	G	G1
N6	150	40	26	52	43	36	12	18.5

Note : We can provide Nozzle holes as per Customer Requirement & Design

MATERIAL - ALLOY CAST IRON

# Round Jali 2 Pcs / 4 Pcs



DIMENSIONS IN MM							
SR.NO	J1	J2	J3	J4	J5	J6	J7
A	740	1100	800	680	720	900	1000

DIMENSIONS IN MM		
SR.NO	J8	J9
A1	490	530

MATERIAL - ALLOY CAST IRON